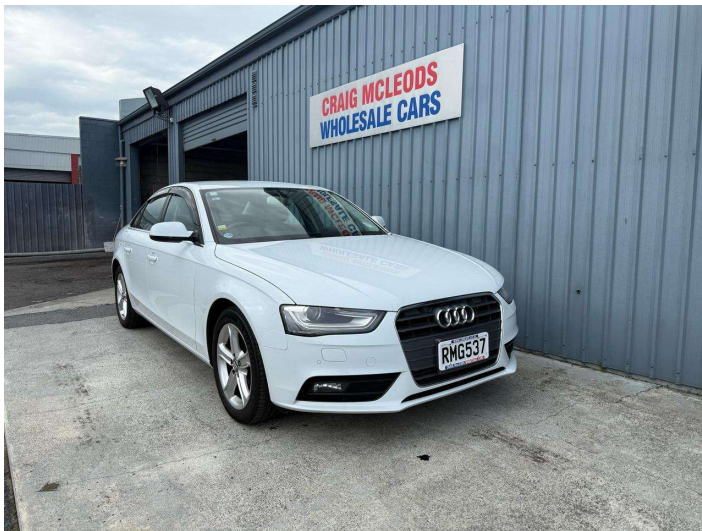



2013 Audi A4 2.0TFSI



Purchase Price **\$15,990**
Includes GST, Registration & Licensing

Finance may be available on this vehicle. Ask one of our friendly staff for more information.

Gain peace of mind with Mechanical Breakdown Insurance. **Ask us how.**



- Top features**
- » 17"Alloys
 - » 3 Diagonal Rear Belts
 - » 6 SRS Airbags
 - » ABS Brakes
 - » Chain Driven
 - » Child Seat Anchor Poin...
 - » Dual Climate Air Condi...
 - » Electric Front Seats
 - » Electric Mirrors
 - » Electric Windows
 - » Electronic Power Contr...
 - » Electronic Stability C...
 - » Factory Media Unit
 - » Heated Front Seats
 - » Immobiliser
 - » i-Stop
 - » Parking Sonar Front An...
 - » Remote Central Locking

Body Style
4 door, Sedan

Odometer
32,788 km

Engine
2000 cc, Internal Combustion

Fuel Type
Petrol

Transmission
Auto, Front Wheel

Wheels
-

VIN
WAUZZZ8K1EA030310

Interior
-

Safety



Based on 2024 UCSR rating for 08-15 models

Reg No.
RMG537

Ext Colour
White

History
Ex-Overseas, 1 owner

Seats
5 seats

CO2 Emissions
★★★★☆
188 grams/km

Energy Economy
★★☆☆☆☆

Annual fuel cost of \$3,140
8L per 100km

Cost per year is an estimate based on petrol price of \$2.80 per litre and an average distance of 14000 km. Emissions and Energy Economy figures standardised to 3P WLTP.

Stock ID: 30318



Craig McLeods Wholesale Cars | Phone 07 850 8168 | Email craig@cmcars.co.nz
552 Te Rapa Road, Hamilton 3200, New Zealand
www.cmcars.co.nz

