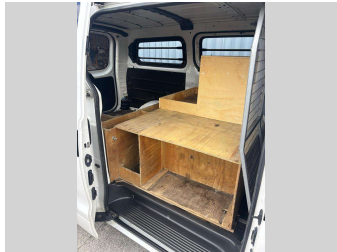
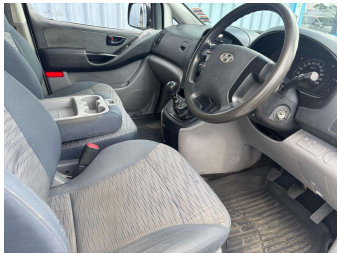


2015 HYUNDAI ILoad 2.5 CRDI MANUAL



Purchase Price

\$11,990

Includes GST, Registration & Licensing

Finance may be available on this vehicle. Ask one of our friendly staff for more information.

Gain peace of mind with Mechanical Breakdown Insurance. **Ask us how.**



Top features

- » ABS Brakes
- » Air Conditioning
- » Dual Air Bags
- » Electric Mirrors
- » NZ CD/Stereo With Blue...
- » Remote Central Locking
- » Reverse Camera
- » Roof Rails
- » Tow Bar
- » Traction Control

Body Style

5 door, Van

Odometer

279,219 km

Engine

2500 cc, Internal Combustion

Fuel Type

Diesel

Transmission

6-Speed Manual, Rear Wheel

Wheels

-

VIN

KMFWBX7KLFU746010

Interior

-

Safety



Based on 2024 UCSR rating for 08-21 models

Reg No.

JMT115

Ext Colour

White

History

NZ New, 1 owner

Seats

3 seats

CO2 Emissions

★ ★ ☆ ☆ ☆ ☆

243 grams/km

Energy Economy

★ ★ ☆ ☆ ☆ ☆

**Annual fuel cost of \$3,640
9.2L per 100km**

Cost per year is an estimate based on diesel price of \$2.00 per litre and an average distance of 14000 km. Includes Road User Charges (RUC). Emissions and Energy Economy figures standardised to 3P WLTP.

Stock ID: 30051



Craig McLeods Wholesale Cars | Phone 07 850 8168 | Email craig@cmcars.co.nz
552 Te Rapa Road, Hamilton 3200, New Zealand
www.cmcars.co.nz

