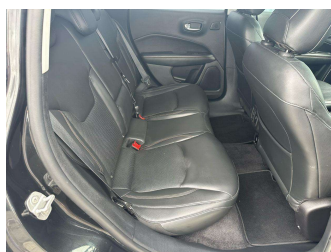
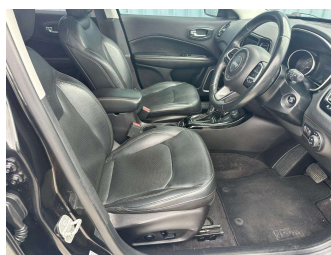



# 2018 Jeep Compass LIMITED 2.4P/4WD/8AT



**Purchase Price** **\$19,990**  
Includes GST, Registration & Licensing

Finance may be available on this vehicle. Ask one of our friendly staff for more information.

Gain peace of mind with Mechanical Breakdown Insurance. **Ask us how.**



- Top features**
- » 18" ALLOYS
  - » 3 Diagonal Rear Belts
  - » 4WD
  - » 6 SRS Airbags
  - » ABS Brakes
  - » Adaptive Cruise Contro...
  - » Auto Headlights
  - » AUX Input
  - » Chain Driven
  - » Child Seat Anchor Poin...
  - » Daytime Running lights
  - » Dual Climate Air Condi...
  - » Electric Drivers Seat...
  - » Electric Mirrors
  - » Electric Windows
  - » Electronic Stability C...
  - » Factory Media Unit
  - » Fog Lights

Body Style  
**5 door, SUV**

Odometer  
**112,905 km**

Engine  
**2400 cc, Internal Combustion**

Fuel Type  
**Petrol**

Transmission  
**Auto, 4WD**

Wheels  
-

VIN  
**MCANJRCBXJFA10648**

Interior  
-

Safety



Based on 2025 VSRR rating

Reg No.  
**LEG424**

Ext Colour  
**Black**

History  
**NZ New, 3 owners**

Seats  
**5 seats**

CO2 Emissions  
**★ ★ ☆ ☆ ☆ ☆**  
**260 grams/km**

Energy Economy  
**★ ☆ ☆ ☆ ☆ ☆**

**Annual fuel cost of \$4,230**  
**10.8L per 100km**

Cost per year is an estimate based on petrol price of \$2.80 per litre and an average distance of 14000 km. Emissions and Energy Economy figures standardised to 3P WLTP.

**Stock ID: 30374**



Craig McLeods Wholesale Cars | Phone 07 850 8168 | Email [craig@cmcars.co.nz](mailto:craig@cmcars.co.nz)  
552 Te Rapa Road, Hamilton 3200, New Zealand  
[www.cmcars.co.nz](http://www.cmcars.co.nz)

