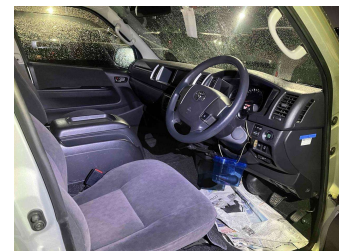


# 2018 Toyota HIACE GL 10 Seater



**Purchase Price** **\$49,990**

Includes GST  
Excludes on-road costs of \$360

Finance may be available on this vehicle. Ask one of our friendly staff for more information.

Gain peace of mind with Mechanical Breakdown Insurance. **Ask us how.**



an ASSURANT company

**Top features**

None Listed

**Body Style**  
4 door, Van

**Odometer**  
11,582 km

**Engine**  
2700 cc, Internal Combustion

**Fuel Type**  
Petrol


**Transmission**  
Auto, Rear Wheel

**Wheels**  
-

**VIN**  
-

**Interior**  
-

**Safety**



Based on 2023 UCSR rating for 05-19 models

**Reg No.**  
-

**Ext Colour**  
Silver

**History**  
Ex-Overseas

**Seats**  
10 seats

**CO2 Emissions**  
★ ★ ☆ ☆ ☆ ☆  
256 grams/km

**Energy Economy**  
★ ☆ ☆ ☆ ☆ ☆  
**Annual fuel cost of \$4,310**  
11L per 100km

Cost per year is an estimate based on petrol price of \$2.80 per litre and an average distance of 14000 km. Emissions and Energy Economy figures standardised to 3P WLTP.

**Stock ID: 29741**



Craig McLeods Wholesale Cars | Phone 07 850 8168 | Email craig@cmcars.co.nz  
552 Te Rapa Road, Hamilton 3200, New Zealand  
www.cmcars.co.nz

