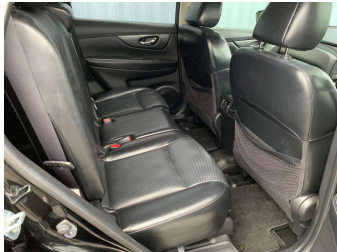
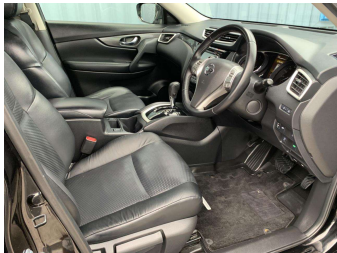


# 2016 Nissan X-Trail 20XT EMERGENCY BRAKE



Purchase Price

**\$22,990**

Includes GST  
Excludes on-road costs of \$360

Finance may be available on this vehicle. Ask one of our friendly staff for more information.

Gain peace of mind with Mechanical Breakdown Insurance. **Ask us how.**



## Top features

- » 3 SRS Airbags
- » 360 Degree Camera
- » 7 Full Shoulder Belts
- » ABS Brakes
- » Auto Headlights
- » AUX Input
- » CD/Stereo
- » Cruise Control
- » Dual Climate Air Condi...
- » Econ (Fuel Saver Mode)
- » Electric Mirrors
- » Electric Open/Close Ta...
- » Electronic Stability C...
- » Fog Lights
- » Heated Front Seats
- » Immobiliser
- » Intel Key
- » ISO FIX

Body Style

**5 door, SUV**

Odometer

**82,000 km**

Engine

**2000 cc, Internal Combustion**

Fuel Type

**Petrol**

Transmission

**Auto, Front Wheel**

Wheels

-

VIN

**7AT0DH6LX24510235**

Interior

-

Safety



Based on 2023 UCSR rating for 14-21 models

Reg No.

-

Ext Colour

**Black**

History

**Ex-Overseas**

Seats

**7 seats**

CO2 Emissions

★★★★☆

**162 grams/km**

Energy Economy

★★☆☆☆☆

**Annual fuel cost of \$2,700  
6.9L per 100km**

Cost per year is an estimate based on petrol price of \$2.80 per litre and an average distance of 14000 km. Emissions and Energy Economy figures standardised to 3P WLTP.

**Stock ID: 29684**



Craig McLeods Wholesale Cars | Phone 07 850 8168 | Email  
craig@cmcars.co.nz  
552 Te Rapa Road, Hamilton 3200, New Zealand  
www.cmcars.co.nz

