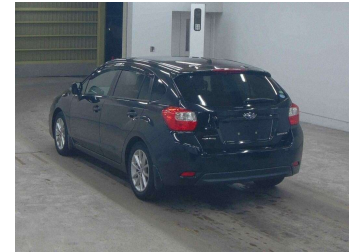



2012 Subaru IMPREZA 2.0I Sports Eyesight



Purchase Price **\$14,990**
Includes GST
 Excludes on-road costs of \$360

Finance may be available on this vehicle. Ask one of our friendly staff for more information.

Gain peace of mind with Mechanical Breakdown Insurance. **Ask us how.**



Top features
 None Listed

Body Style
5 door, Hatchback

Odometer
28,198 km

Engine
2000 cc, Internal Combustion

Fuel Type
Petrol

Transmission
Auto, 4WD

Wheels
 -

VIN
 -

Interior
 -

Safety


Based on 2025 UCSR rating for 12-16 models

Reg No.
 -

Ext Colour
Black

History
Ex-Overseas

Seats
5 seats

CO2 Emissions
★★★★☆
167 grams/km

Energy Economy
★★☆☆☆
Annual fuel cost of \$2,780
7.1L per 100km

Cost per year is an estimate based on petrol price of \$2.80 per litre and an average distance of 14000 km. Emissions and Energy Economy figures standardised to 3P WLTP.

Stock ID: 30449



Craig McLeods Wholesale Cars | Phone 07 850 8168 | Email craig@cmcars.co.nz
 552 Te Rapa Road, Hamilton 3200, New Zealand
www.cmcars.co.nz

