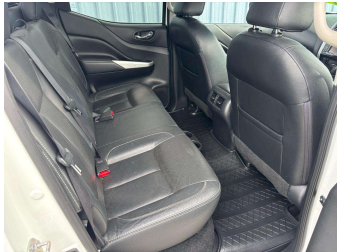
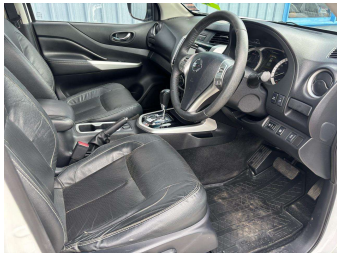


# 2016 Nissan NAVARA ST-X 2.3D/4WD/7AM/UT



Purchase Price

Includes GST, Registration & Licensing

**\$29,990**

Finance may be available on this vehicle. Ask one of our friendly staff for more information.

Gain peace of mind with Mechanical Breakdown Insurance. **Ask us how.**



### Top features

- » 2WD/4WD Options
- » 3 Diagonal Rear Belts
- » 7 SRS Airbags
- » ABS Brakes
- » Auto Headlights
- » AUX Input
- » Cruise Control
- » Diff Lock
- » Down Hill Assist
- » Dual Climate Air Condi...
- » Electric Drivers Seat
- » Electric Mirrors
- » Electronic Stability C...
- » Fog Lights
- » Heated Front Seats
- » High/Low Ratio
- » Immobiliser
- » Intel Key

Body Style

**4 door, Ute**

Odometer

**177,900 km**

Engine

**2300 cc, Internal Combustion**

Fuel Type

**Diesel**

Transmission

**Auto, 4WD**

Wheels

-

VIN

**MNTCB4D23A0010218**

Interior

-

Safety



Based on 2024 UCSR rating for 15-22 models

Reg No.

**JUB715**

Ext Colour

**White**

History

**NZ New, 1 owner**

Seats

**5 seats**

CO2 Emissions

★★★★☆☆

**215 grams/km**

Energy Economy

★★★★☆☆

**Annual fuel cost of \$3,330  
8.1L per 100km**

Cost per year is an estimate based on diesel price of \$2.00 per litre and an average distance of 14000 km. Includes Road User Charges (RUC). Emissions and Energy Economy figures standardised to 3P WLTP.

**Stock ID: 30119**



Craig McLeods Wholesale Cars | Phone 07 850 8168 | Email [craig@cmcars.co.nz](mailto:craig@cmcars.co.nz)  
552 Te Rapa Road, Hamilton 3200, New Zealand  
[www.cmcars.co.nz](http://www.cmcars.co.nz)

